

## Technology Strategy for Your GRC Journey

**Vinay Bapna**  
Vice President - Marketing  
MetricStream

# Are You Seeing the Change?

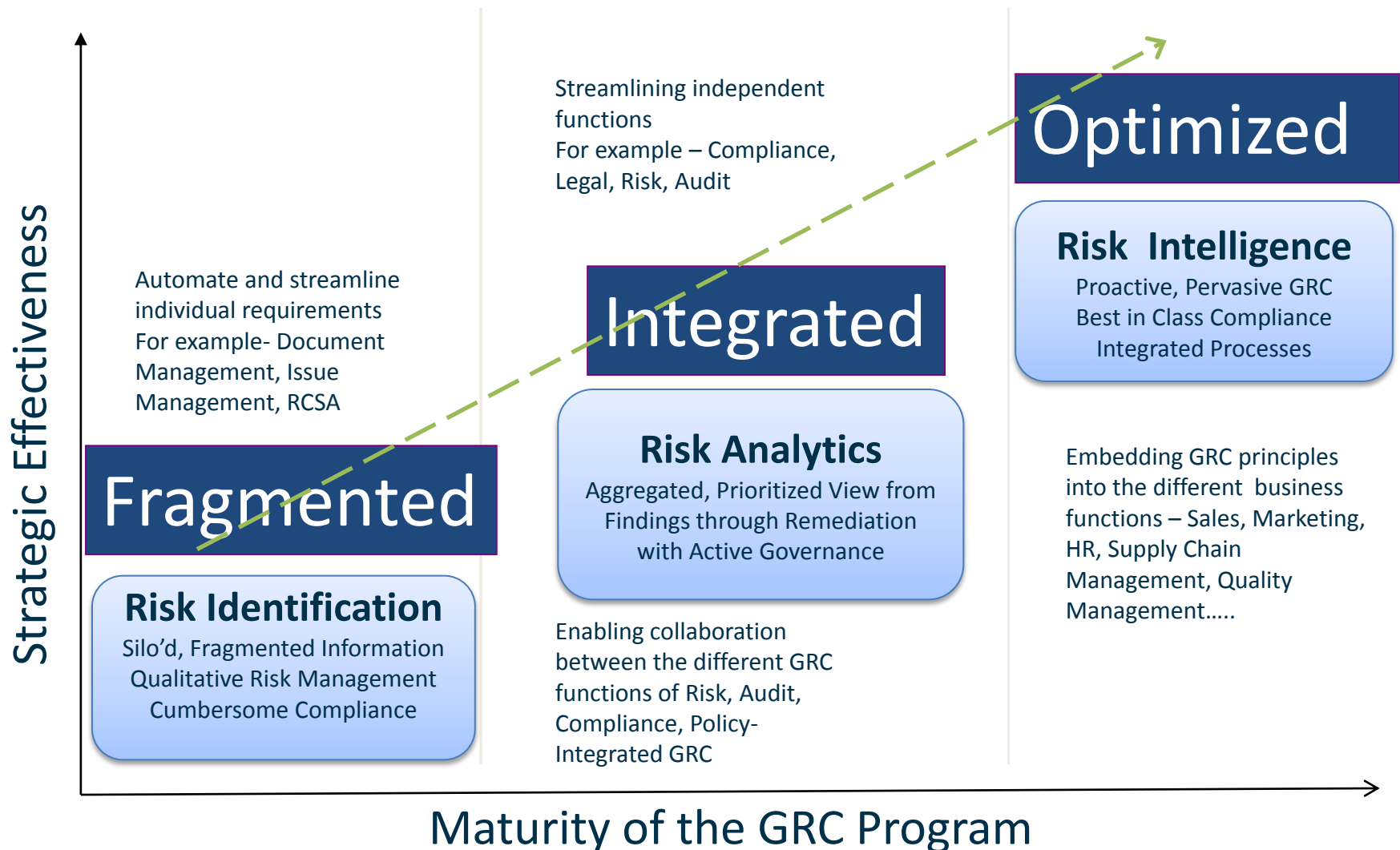
1. Performance Focus
2. Regulatory Changes
3. Cloud, Social Media, Mobile
4. Complex Global Vendor Ecosystem
5. Proliferation of Requirements

# But...



## How are you changing?

# GRC Journey



# Pervasive GRC

- Embedded in day to day Business, IT, Security processes
  - Proactive vs Reactive
  - Driving performance vs post-facto assurance
  - Examples: Policy
- Anytime, Anywhere
  - Web, Offline, Mobile, Cloud access
- Contextual coverage of ‘Core’ and ‘Long-tail’
  - Information aggregation from multiple systems and sources
  - Apps that span a wide spectrum of use cases,
  - Leverages a federated taxonomy and contextual insights for decisioning

# What is GRC Journey?

GRC Journey is about deriving value from GRC investments, helping accelerate organizational readiness to successfully implement a diverse and valuable set of use cases on the journey towards Pervasive GRC

# Why GRC Journey?

## Recognize that GRC Program implementation is a Journey

It begins with consolidating efforts around priority initiatives such as policy management, risk management, privacy, security or corporate compliance and grows to embrace new stakeholders and use cases

## Manage GRC as a program, involving people, processes and technologies

Phased, multi-month or multi-year initiatives that will allow your organization to realize immediate value, while building a solid GRC foundation that will support long-term goals.

# GRC Journey – Addressing Key Challenges



## ***GRC Maturity and Deriving Value from GRC Investments***

*Focus on right priorities to achieve better performance, make better decisions*



## ***GRC Journey Planning***

*Build a clear program with key stakeholders*



## ***GRC Platform, Data Model for Federation***

*Build Federated taxonomies across different business units*



## ***GRC Applications with Accelerated Deployments***

*Streamline and automate for high value*



## ***Continuous Improvement***

*Engage in our Community for Innovation and Change*



# Federated Architecture

- Enables Agility, Flexibility
  - Supports Different Taxonomies
  - **Horizontally** across GRC groups - SOX, Audit, Risk, Vendor, IT, Legal
  - **Vertically** across business groups - Corporate, BUs, Country, Product Line, Division, Subsidiaries
  - Centralized control, decentralized ownership
  - Multi-dimensional relationships with roll-up reporting
  - Multiple groups can use the same artifacts while having variants

### Browse: Processes

- ▶ Affirmative Action Plans
- ▶ Branch Admin
- ▶ Certifications in Connection w
- ▶ Certifications in Connection w
- ▶ Citations
- ▶ Commercial Banking Group
- ▶ Commercial Lending
- ▶ Conduct FERC Training
- ▶ Conduct FERC Training by sunde
- ▶ Construction Lending Manual
- ▶ Consumer Lending
- ▶ Consumer Lending Support
- ▶ Corporate Security
- ▶ Credit Administration
- ▶ Credit Card Services
- ▶ Dealer Banking
- ▶ Deposit Operations
- ▶ Distributed Capture
- ▶ Electronic Funds Transfer
- ▶ Employee Banking
- ▶ Examinations and Inspections
- ▶ Exclusion for News Media
- ▶ Home Loan Division
- ▶ INTERVEST
- ▶ ISS / Grant Program Management
- ▶ Information Technology
- ▶ Item Processing
- ▶ Loan Servicing
- ▶ Marketing

Processes



Processes Mapped to Risks

### Process: Electronic Funds Transfer [PROC-1055]

Linkages between Regulations, Policies, Requirements, Risks, Controls, Organizations, etc.

MetricStream Welcome: Program

Compliance Administration

Assignments Dashboards Reports

Browse: Processes

- ▶ Electronic Funds Transfer
  - ▶ Process
    - ▶ All Processes - General
      - ▶ Risk
        - ▶ Identify theft
        - ▶ EFT Related frauds
        - ▶ Unauthorised transactions
        - ▶ Non compliance with Regulatory
        - ▶ Reg E related Automation tools
        - ▶ Reputation risk due to delays
        - ▶ Customer account statements do
  - ▶ ACH
  - ▶ Mobile Banking Transactions
  - ▶ ATM Banking
    - ▶ Risk
      - ▶ ATM Frauds
      - ▶ Poor customer service
      - ▶ Forged notes
      - ▶ Short cash dispensed
  - ▶ Overdrafts
    - ▶ Risk
      - ▶ Charing overdraft fees without
      - ▶ Overdraft Protection program n
      - ▶ Misleading marketing and opt i
      - ▶ Inadequate disclosure of opt i
  - ▶ Net banking Transfers
    - ▶ Risk
      - ▶ Fraudulent transfers over Net

MetricStream

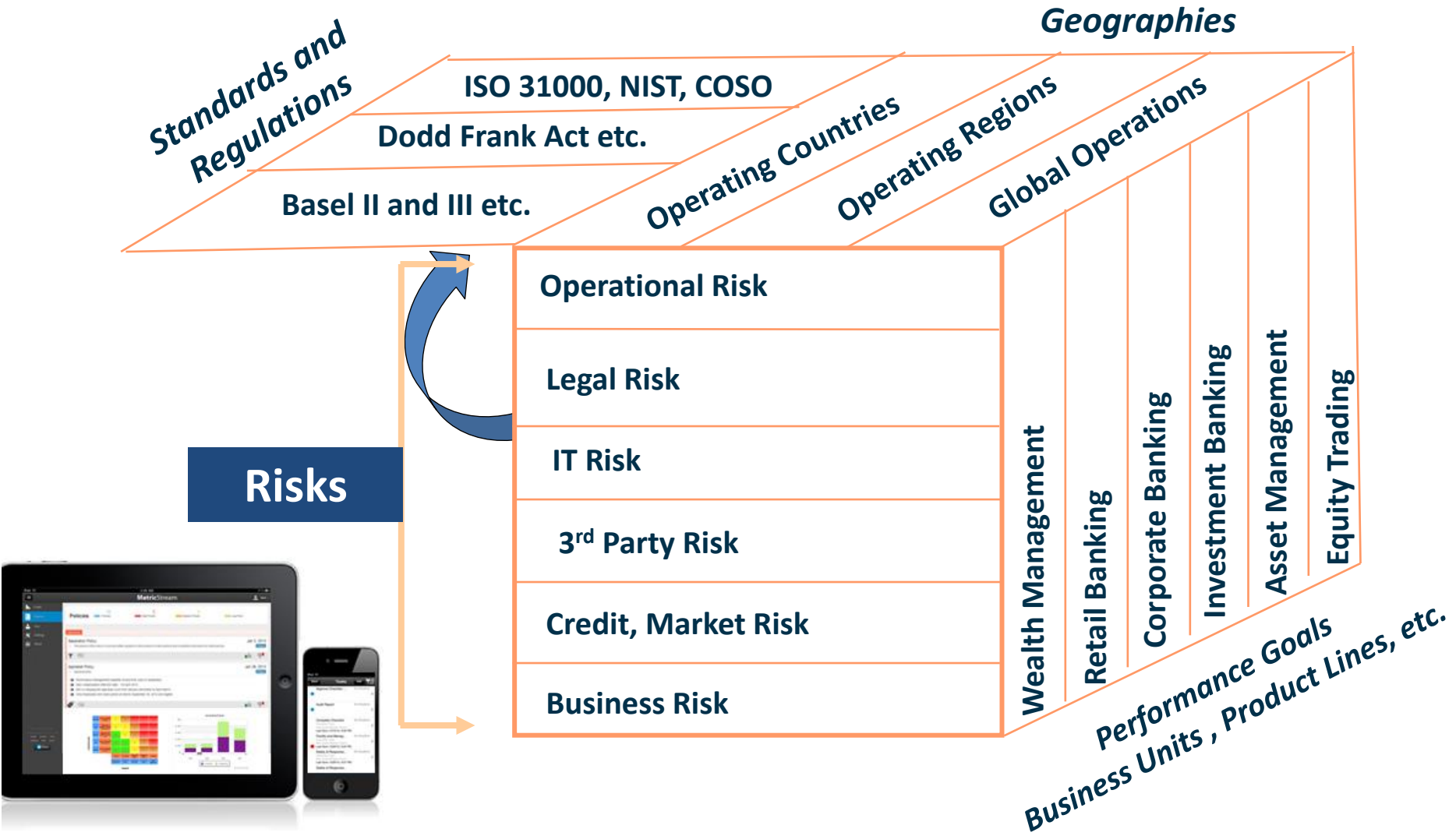
Compliance Administration

Create/Manage Reports/Dashboards

Browse: Regulatory Bodies

- ▶ DOL
- ▶ EEOC
- ▶ FDIC
  - ▶ Area of Compliance
    - ▶ Policy AYU29822
      - ▶ FDIC
        - ▶ Model Reference
          - ▶ Portion 1
          - ▶ Citation 2
          - ▶ Portion 2
          - ▶ Section 1
          - ▶ Citation 1
    - ▶ Regulation E
      - ▶ FDIC
        - ▶ Requirements
          - ▶ Portions
          - ▶ Citations
          - ▶ Sections

# Modeling Organizational Structures and Hierarchies



# Case Study – Large Consumer Product Brand

## Challenges

- Highly regulated product mix (Global/Local)
- Visibility into risks across multiple business units and suppliers
- Alignment of policies and procedures across 200,000+ employees and suppliers



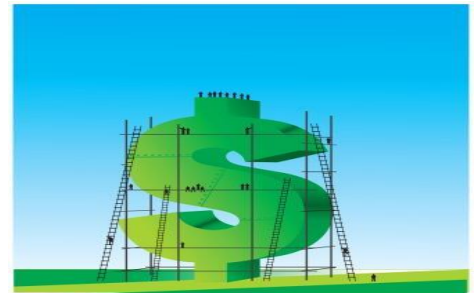
## How MetricStream Helped?

- Common platform for rationalizing risk and control framework
- Federated data model to support multiple business units
- Reduce cost with common issue management processes

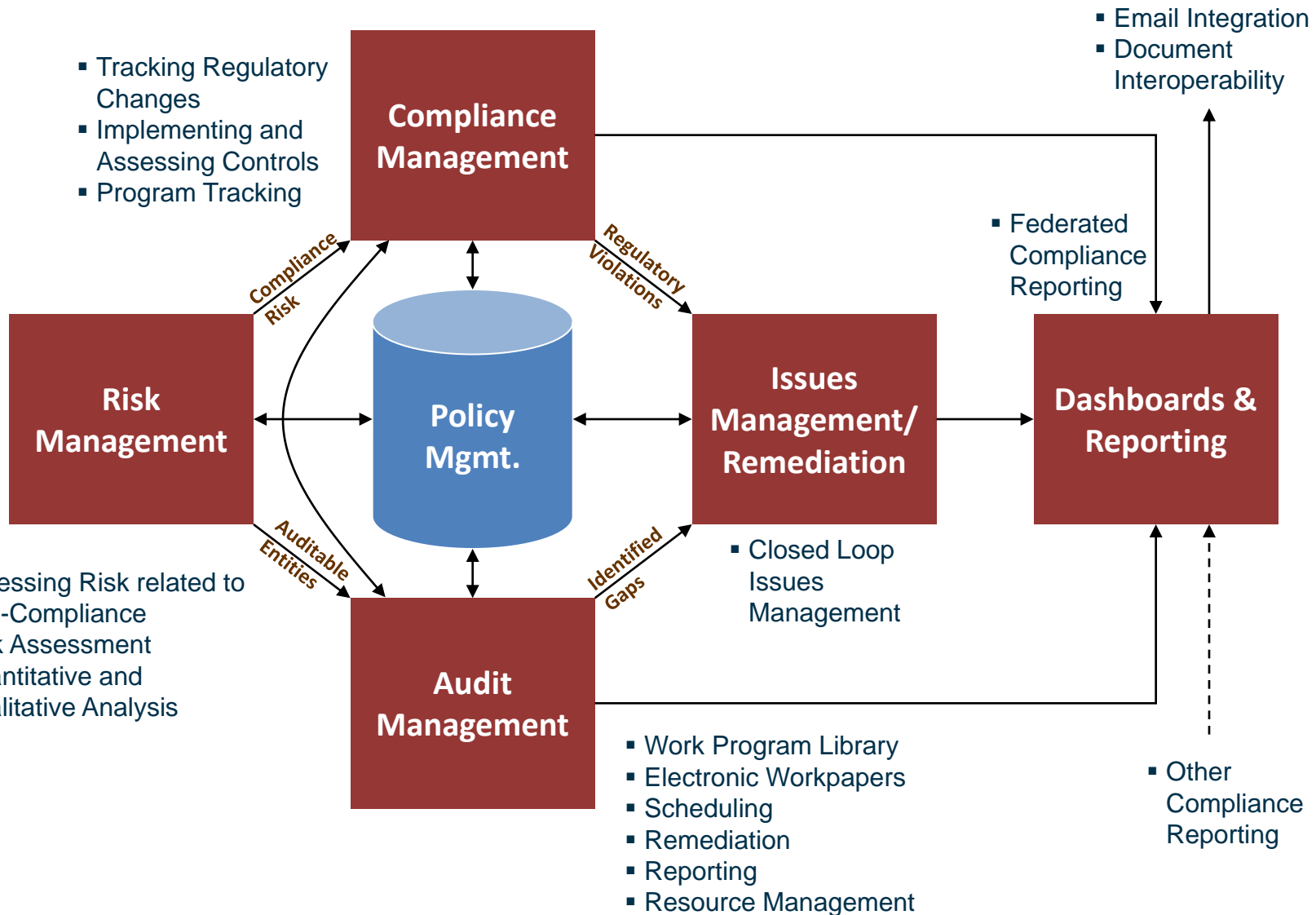


## Business Benefits

- Streamlined processes for better compliance
- Lowered risks with higher visibility
- Better governance across business units and supplier networks

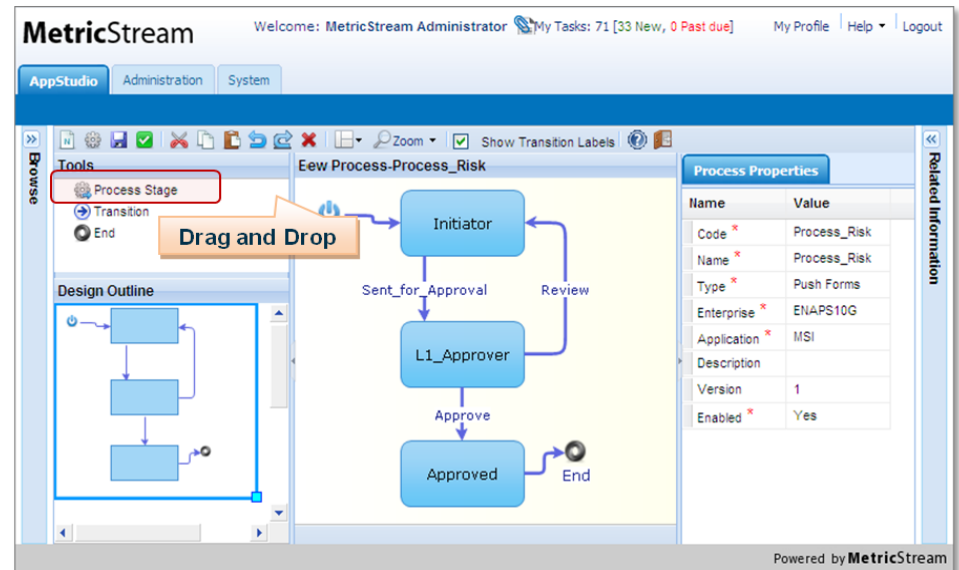


# Collaboration Across GRC Functions



# Configurability: Ensure Long-term Success

- Map pre-packaged solutions to your business processes
  - Easy user adoption
  - Organizational change management
- Adapt to changing business requirements
  - No vendor dependency
  - Change control
- Minimize support and maintenance overheads
  - Costs, Staffing



Powered by MetricStream

# Compliance Content and Regulatory Changes

- Policy and compliance activities
- Impact analysis and mapping
- Triggering assessments, policy updates

The screenshot displays the ComplianceOnline.com website interface. At the top, there's a navigation bar with links for News, Best Practices, Online Training, Store, Answers, and QMS Software. A search bar is prominently featured. Below the navigation, there are sections for 'Top Categories' (Banking and Financial Services, Biotechnology, Clinical Research, FDA Compliance, Green Compliance, HIPAA Compliance, HR Compliance, Laboratory Compliance, Medical Devices, Pharmaceutical Quality and ISO Compliance, Risk Management, SEC Compliance, SOX Compliance) and 'More Categories' (Industries, Regulations & Standards, Roles). A 'Featured Trainings' section highlights 'Travel Less Train Online'. The main content area is divided into several sections: 'Regulatory Insight' with a 'Spotlight' on 'Madoff based suit adds risk for brokers, advisers', 'My CourtLink' section with 'Recent Searches' and 'Recent Dockets & Documents', and 'Today's Alerts' and 'Tracked Dockets'. The 'My CourtLink' section includes a table of recent searches and docket matches.

Search	Matches
howard v - PGC	134 docket matches
Untitled Search 11/9/2006	0 docket matches
Howard University - VA multiple	0 docket matches
NJ Statewide - Eric Olson	16 docket matches
NJ Atlantic - eric olson	1 docket matches
Joss 3	0 docket matches
JOEE 2	0 docket matches
Untitled Search 11/7/2006	2 docket matches
JOEE	0 docket matches
VA - Wal-mart	1 docket matches

Alert	Count
Creditor	8
Federal Subject Matter	59
Judge	3
Litigant	65
Patent	6
State Subject Matter	358

Docket	Case Name	Date
-	Spadino Panela vs. Kass Martin B	11/9/2006
-	Imperial Commodities Corp vs. Barbara Reinoldo	11/8/2006
-	Ronald E Olson et al v. Ion Pneumo Abbas Corporat at al	11/9/2006
-	USA v. LIBBY	11/9/2006

# Case Study – Diversified Financial Services Company

## Challenges

- Timely respond to high number of regulations
- Risk, compliance and supplier management processes
- Consistent and insightful reporting for board and executives



## How MetricStream Helped?

- Regulatory intelligence with curated content
- Comprehensive audit and compliance management initiative
- Common platform for rationalizing risk and control framework



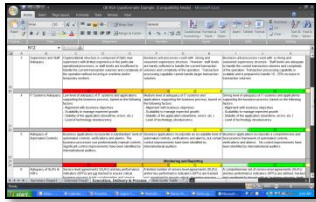
## Business Benefits

- Streamlined process and impact analysis with regulatory process change
- Efficiencies gained through risk analysis and reporting
- Agile responsiveness to change and better governance

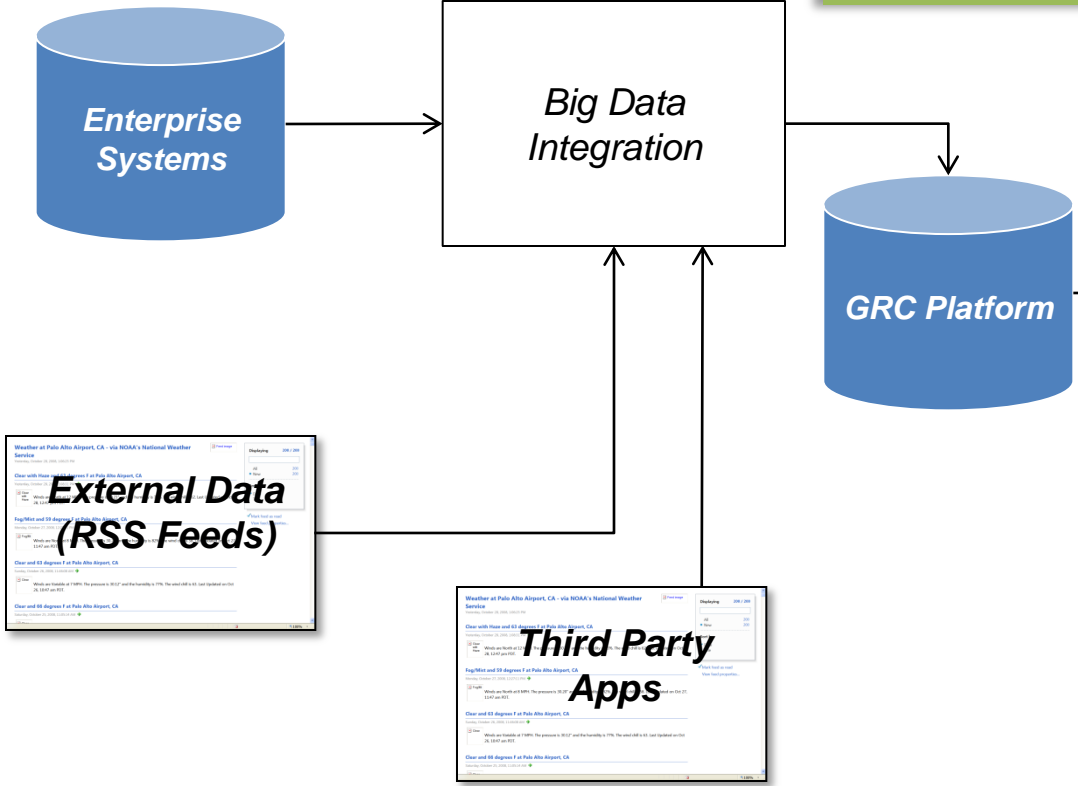




# Integration: GRC as Infrastructure



- Aggregation of structured and unstructured data (Big Data)
- Analytics for risk intelligence and contextual analysis
- Orchestration of native & non-native apps



**KRI Dashboard**

**Social Media Risk Analysis**

Topic	Num of Articles
FDA WARNING	282
FDA GUIDANCE	181
COMPETITIVE INTELLIGENCE	9
COMPANY MENTIONS	3

Author Name	Profile	Source	Num
Shawn Wilson	[Profile Icon]	Twitter	69
BARS	[Profile Icon]	Twitter	26
Carman	[Profile Icon]	Twitter	24
Alan Hall	[Profile Icon]	Twitter	22
Dee Cooke	[Profile Icon]	Twitter	18

# GRC Implementation Performance Excellence

- **Faster Time-to-Value**
  - Artifacts for accelerated deployment
  - Methodology, planning tools, libraries, configuration workbooks
- **Agile Iterative Approach**
  - Enable taxonomy harmonization, on ramping, change management, IT alignment
- **Domain Expertise**
  - Experienced GRC professionals to align the solutions as well as provide advice on improving those programs



# How Technology Enables GRC Journey

- **Federation & Collaboration**  
Ensure flexibility and extensibility
- **Configurability & Agility**  
Map to existing and changing business processes
- **Integration**  
Interface with external systems and data sources
- **Content**  
Leverage content sources seamlessly
- **Implementation**  
Focus on time-to-value drivers

# Next Step



“Every journey starts  
with a single step.”  
– Confucius

# Towards Pervasive GRC



Thank You