

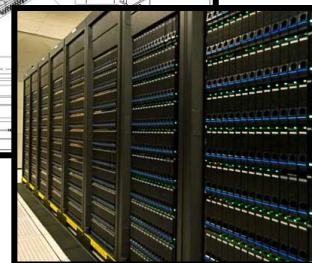
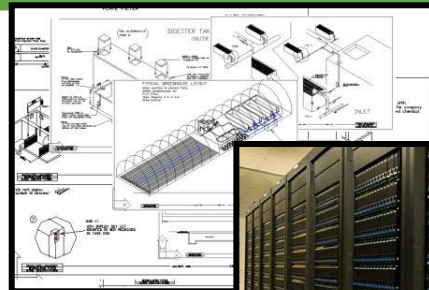
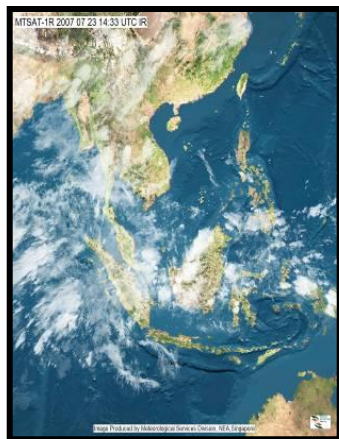
## The Importance of Data Governance

Salil Dighe  
*CEO Meta Byte Technologies*

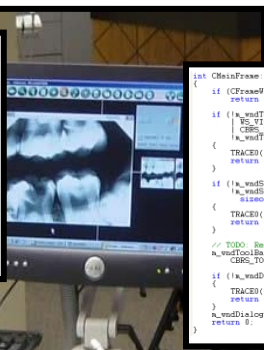
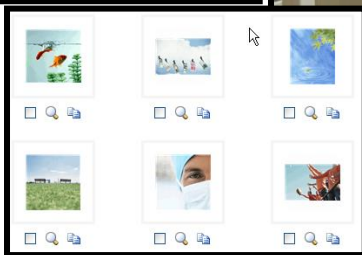
# What is Data Governance?

The rightful access to information

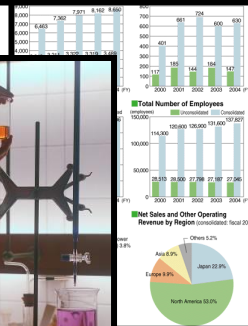
# How Does This Affect My Risk?



Information is dynamic



```
int CMainFrame::OnCreate(LPCTSTR lpszTemplateName)  
{  
    if (!CMainFrame::OnCreate(lpszTemplateName))  
        return -1;  
  
    if (!_wndToolBar.CreateEx(this, TOOLSTYLE_FLAT, WS_CHILD  
        | WS_VISIBLE | CBS_TOP | CBS_GRIPPER | CBS_TOOLTIPS  
        | CBS_FLYBY | CBS_SIZE_DYNAMIC) |  
        !_wndToolBar.LoadToolBar(IDR_MAINFRAME))  
    {  
        TRACE("Failed to create toolbar");  
        return -1; // fail to create  
    }  
  
    if (!_wndStatusBar.Create(this) | |  
        !_wndStatusBar.SetIndicators(indicators,  
        sizeof(indicators)/sizeof(UINT)))  
    {  
        TRACE("Failed to create status bar");  
        return -1; // fail to create  
    }  
  
    // TODO: Remove this if you don't want tool tips or a resizable toolbar  
    _wndToolBar.SetStyle(WS_TOOLBAR_EX | WS_TOOLBAR_EX_FLAT |  
        CBS_TOOLTIPS | CBS_FLYBY | CBS_SIZE_DYNAMIC);  
  
    if (!_wndDialogBar.Create(this, IDD_DIALOGBAR, CBS_TOP, 0x0010))  
    {  
        TRACE("Failed to create dialog bar");  
        return -1; // fail to create  
    }  
    _wndDialogBar.SetDlgItemText(IDC_URL, g_strURL);  
    return 0;  
}
```



# How does this affect My Risk?

1. IT has little or no visibility and control over your information and the rightful recipients
2. What if your information falls into the wrong hands by
  1. Unintentional Exposure
  2. Cyber Attack
  3. Internal malicious user
  4. Espionage
3. What if your customer's information falls into the wrong hands?

# The BIG Questions

**How?** Did it happen

**Why?** Did it Happened

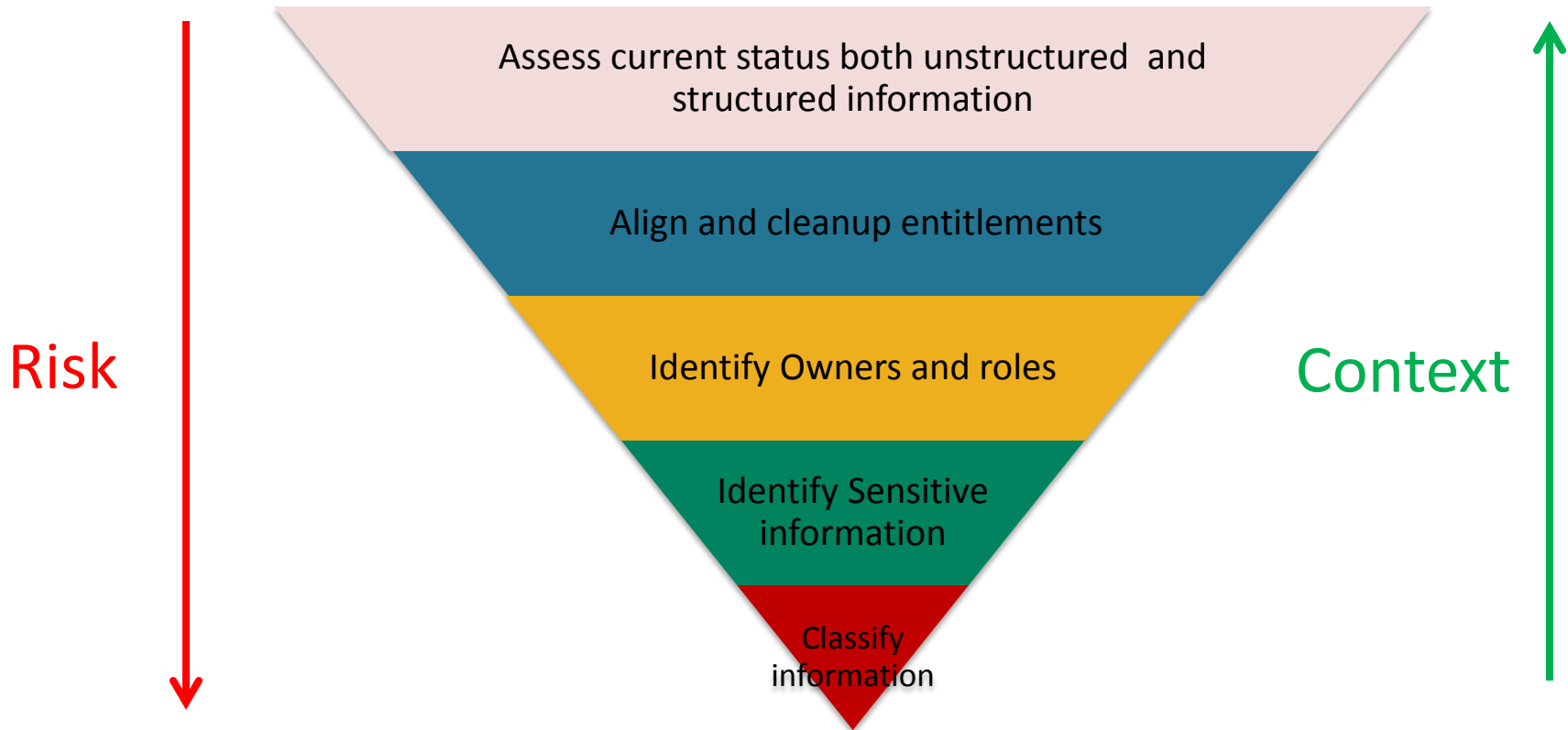
**Who?** Did it

These are not asked until the threat becomes an actuality!

# How to Reduce Your Exposure?

1. Prioritize Data Risks at the Board Level
2. Business Should Drive Data Governance
3. Build a Data Governance Foundation at the Systems Level
4. Generate Context around Information

# How does this help?



# Final Results

1. Reduced Data Loss Risk
2. Full Visibility of Information Access
3. Continuous Monitoring
4. Comprehensive Heatmap for better visibility of risk



# Towards Pervasive GRC

An aerial night view of the Dubai skyline, featuring a prominent, illuminated skyscraper on the right side. The city lights are reflected in the water, and a marina with many boats is visible in the foreground. The sky is a mix of dark blue and orange from the sunset.

Thank You