

MetricStream

GRC

SUMMIT 2013

Apr 30 - May 1, 2013 | Mandarin Oriental, Las Vegas, NV



WELCOME



MetricStream GRC Summit 2013: Product Showcase

ENGAGE | INSPIRE | TRANSFORM

MetricStream

GRC

SUMMIT 2013

Apr 30 - May 1, 2013 | Mandarin Oriental, Las Vegas, NV

Jean Claude Marlin

Vice President, Citigroup

Vidya Phalke

CTO, MetricStream

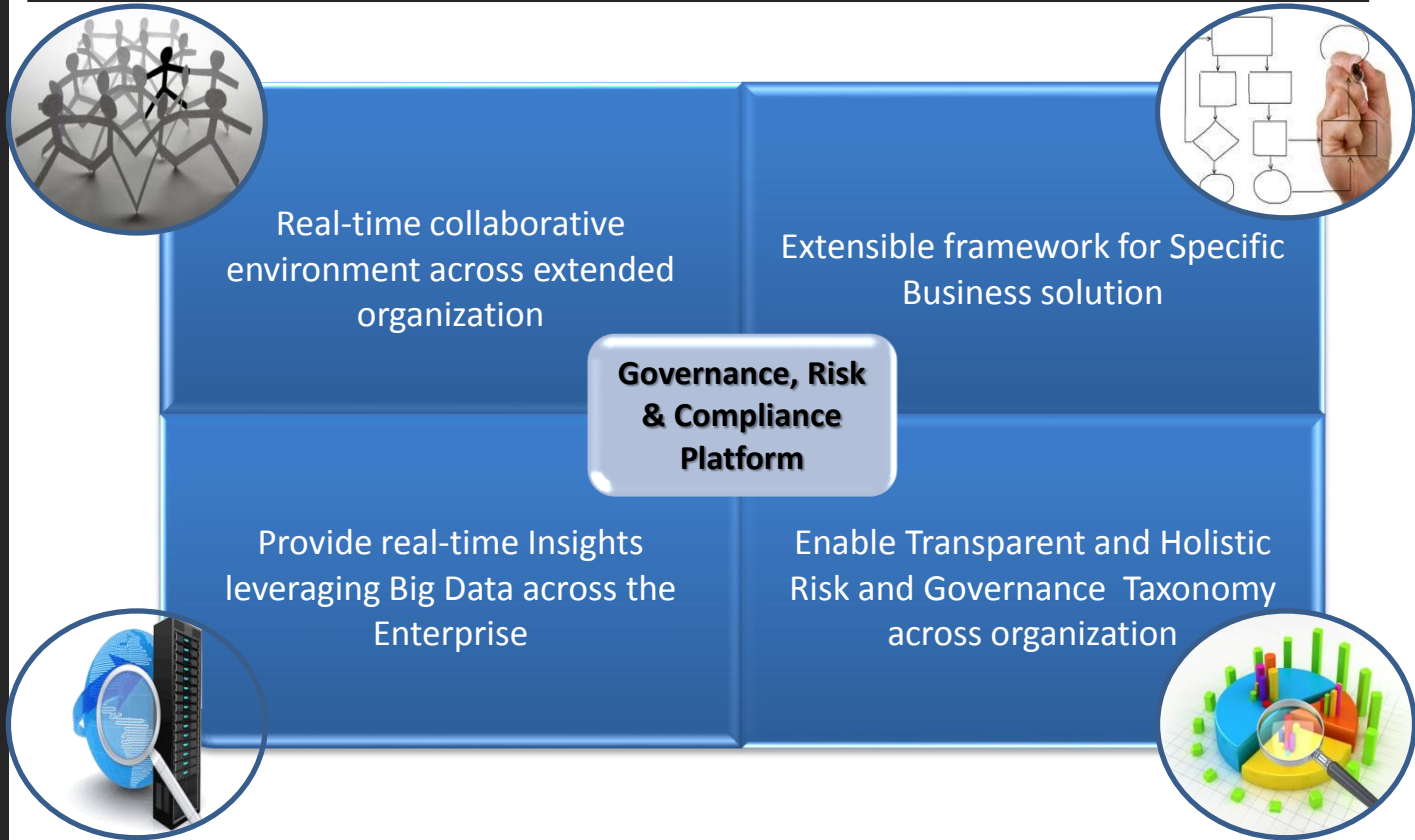
Designing a Future-ready GRC Architecture

ENGAGE | INSPIRE | TRANSFORM

Agenda

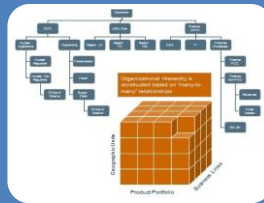
- What is a Future-ready GRC Architecture
- Eight Key foundational capabilities
- MetricStream GRC Platform
- Designing for Future Readiness
- Lessons learned for Citi thus far
- Q&A

What is a Future-Ready GRC Architecture



“Enable synergy across business performance and Risk Management at global corporations by creating, deploying & managing a robust and extensible GRC Platform to manage their Risk & Governance needs while ensuring an optimized Total cost of ownership and Total cost of adoption”

Eight Key Foundational Capabilities



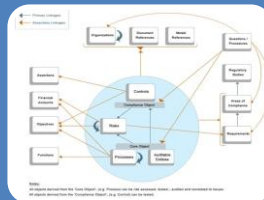
Ability to support complex organizational structures, product portfolios and geographical units

- n-tiered tree based hierarchy
- Ability to model n dimension matrix organization model



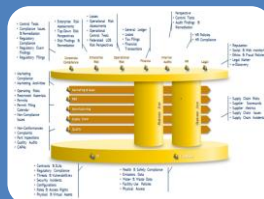
Ability to model new and change existing business processes

- Highly configurable platform to continuously adapt to evolving business scenarios
- Rapid configuration to lower TCO and provide faster time to go live



Federated data model for aligning organization structure and application views

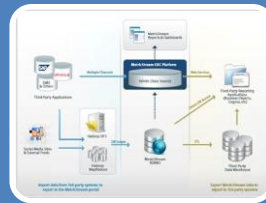
- Enable data model visualization from multiple angles for multiple views
- Align accountability with the organization structure



Architecture for data convergence across systems for better visibility

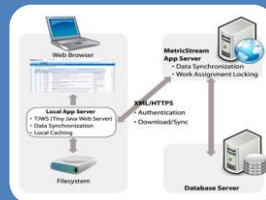
- Real time aggregation of data across internet and internal sources for better perspectives and better analytics as aid to decision making
- Track large amount of historical data for better trend analysis

Eight Key Foundational Capabilities (contd)



Ability to integrate across external data sources

- Create a single source of truth across multiple IT systems for GRC
- Enable continuous control monitoring and measurement across systems



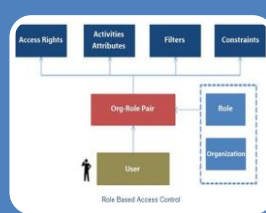
Collaboration using applications across mobile, tablet platforms and offline workflows

- Allow geographically and organizationally spread business units to collaborate across GRC requirements
- Offer anytime anywhere capability with offline briefcase



Advanced analytics and data visualization capabilities

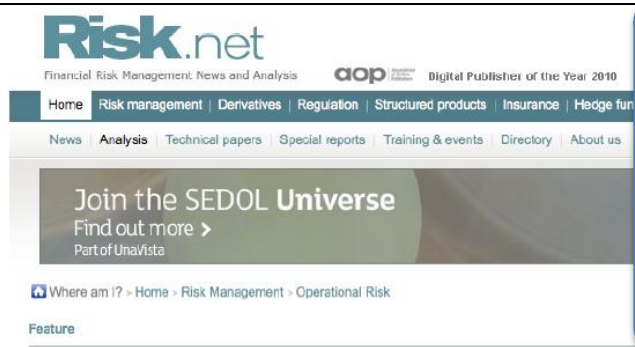
- User friendly and powerful dashboards for quick visualizations
- Drill down capability for thorough data analysis



Advanced data security and privacy capabilities

- Robust security infrastructure to ensure data security and privacy across internal and external organization.
- Data encryption, password protection & single sign-on as standard features

MetricStream GRC Platform – An award winning product (Apr 2013)



“Aggressive regulation has increased the importance of GRC in 2013. MetricStream’s Platform has responded to a growing demand from the customers who are keen to avoid the bite of the regulatory watchdog.”
- Risk.net

GRC platform of the year: MetricStream

Author: Miranda Alexander-Webber
Source: Operational Risk & Regulation | 15 Apr 2013
Categories: Operational Risk, Awards

Aggressive regulation has increased the importance of GRC platform has responded to a growing demand from customers to avoid the bite of regulatory watchdogs

Increased regulatory pressure and ever-heavier regulatory requirements on the governance, risk and compliance (GRC) sector in recent years have led to more firms being keen to avoid being next into the headlines, leading to more firms strengthening their internal controls – and the same is even true in other sectors.

Related articles "It's pretty easy to spot news of a significant dollar amount," says



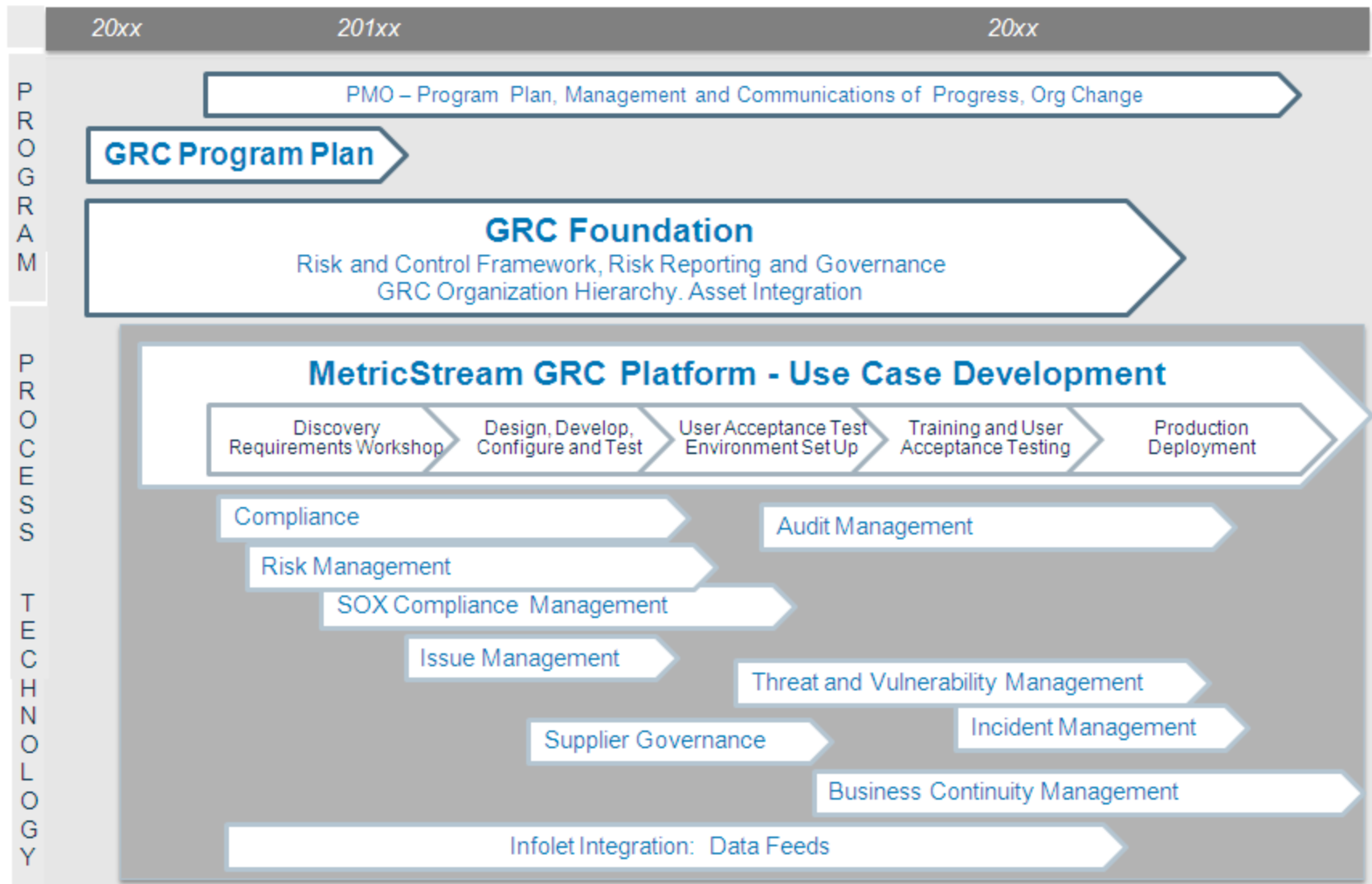
Architecting for Long Term Success – Dimensions to consider

Objective	Specifics
Change Management	<ol style="list-style-type: none">1. Pilot and Incremental Approach2. Managed Feedback loop & User Adoption3. Roadmap that ensures Global rollout
Homogenization	<ol style="list-style-type: none">1. Systems homogenization / integrated2. IT Taxonomy (BUs, Users, Roles, Provisioning)3. Cross-GRC Object homogenization
Resourcing and Planning	<ol style="list-style-type: none">1. Self sufficiency via creating Center of Excellence2. Leverage Vendor Partners3. Extended Organization

Citigroup's experience on the journey towards integrated GRC

Initiative	Business Benefit
Harmonization across Systems, Taxonomy, and GRC Data Elements across organizational units	<ol style="list-style-type: none"> 1. Reduced overall TCO 2. Improved reuse and efficiencies
Creation of Center of Excellence inside Citigroup	<ol style="list-style-type: none"> 1. Improved ability to accommodate change 2. Cost reduction
Tailoring MetricStream's best-practices for Citigroup	<ol style="list-style-type: none"> 1. Reduced risk in downstream adoption

MetricStream GRC Program Implementation



Illustrative 2-3 year view

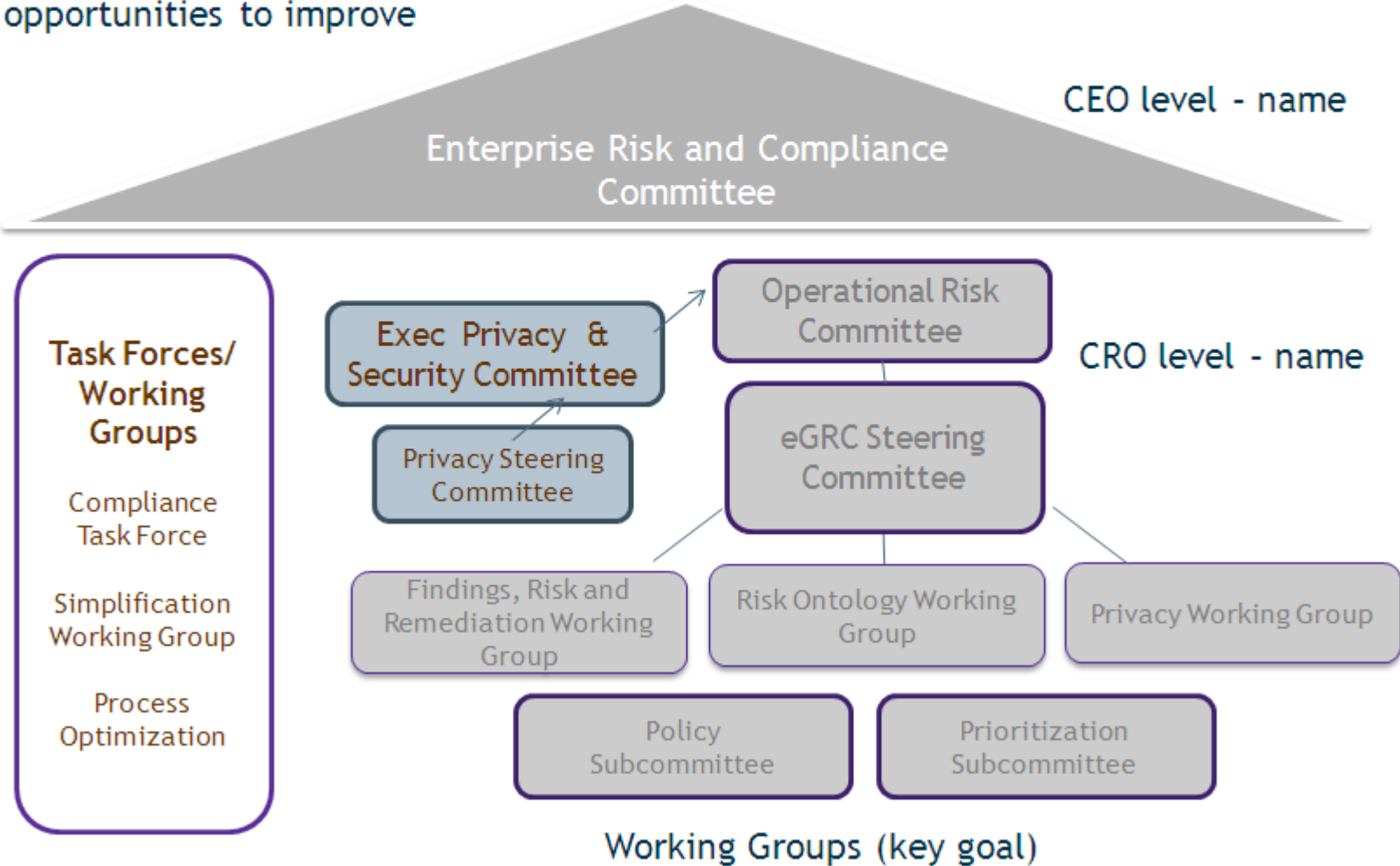
GRC Strategy

Enterprise Decisions to be made for true Integrated GRC

- Common Taxonomy – Common and yet federated
- Organizational hierarchy
- Common Handoff points between groups
- Access Controls for inter and Intra organizational collaboration
- Change Management design
- Business and Application Administration
- Technology decisions – instances, infrastructure, timing

Governance Bodies and Working Groups

Build a model of governance structures that can integrate GRC decision making
Understand weaknesses
and opportunities to improve



MetricStream

GRC

SUMMIT 2013

Apr 30 - May 1, 2013 | Mandarin Oriental, Las Vegas, NV



Questions and Discussion

ENGAGE | INSPIRE | TRANSFORM